



evereön

Achieve More Possibilities

HOSE CLAMPS

YDS evereön
EVEREON INDUSTRIES, INC.

T +886-4-23399907
F +886-4-23398677
E hoseclamp@evereon.com.tw
No.25, Ln. 215, Caohu Rd., Wufeng
Dist., Taichung City 413009, Taiwan



www.ydsevereon.com



COMPANY PROFILE

WE CONCENTRATE ON HOSE CLAMPS

EVEREON INDUSTRIES, INC. is a leading manufacturer of worm gear type, worm drive type and customized hose clamps for almost all industries and commercial applications including auto, industrial, plumbing, agriculture, marine, and heavy duty market.

Since 1994, we, EVEREON, have been devoting to provide hose clamps with easy installation, durable using and safety products for our customers to add value in their business relationship by creating more revenue and cost savings.

SINCE 1994



ISO 9001

QUALITY ADVANTAGES

To ensure our customers always receive hose clamps with stable quality, and good business services, we have ISO 9001 certification and an ERP system to control production operation. The QC section inspects hose clamps in strict standard. In addition, our professional technical teams of R&D and engineering sections have been developing our produced machines and molds for further performance and quality.

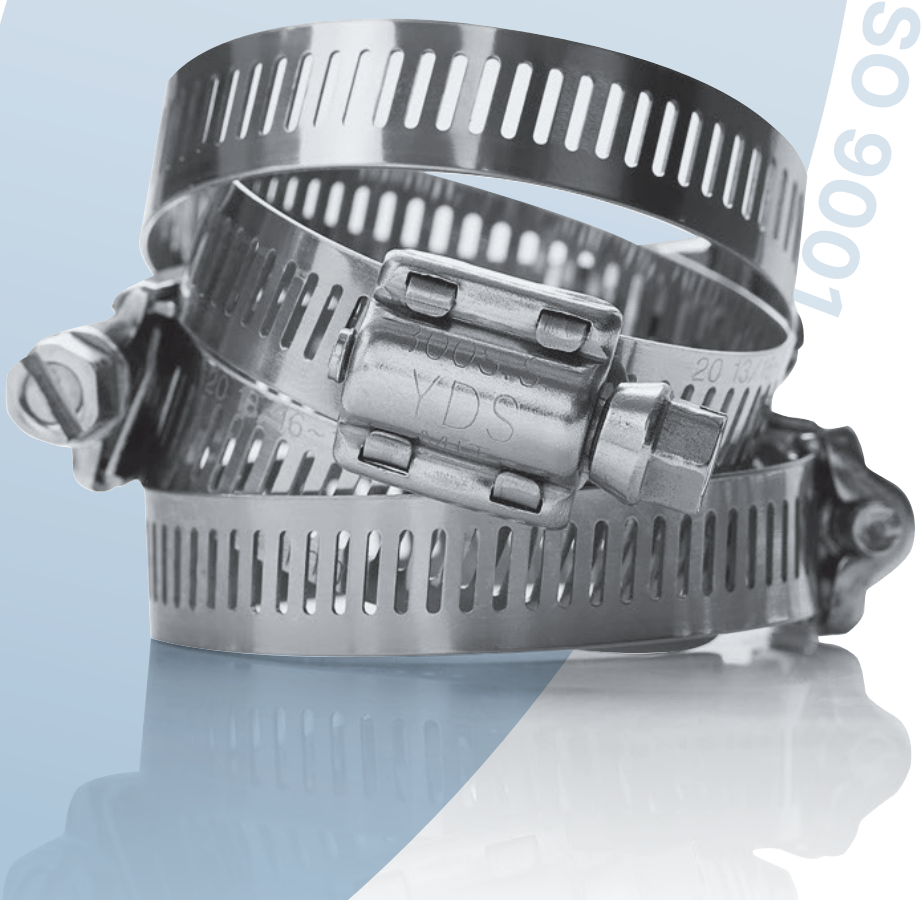
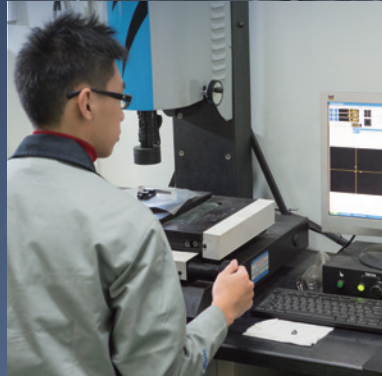
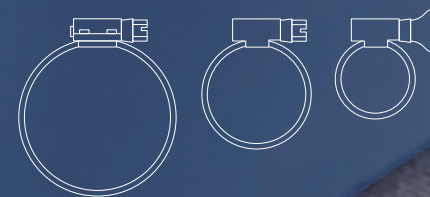
CORE VALUES – ETHIC, EMOTION, EFFICIENCY

With almost 30 years of experience in hose clamps, we earn a good reputation from our customers because we value the business ethics and sincere relationships with customers and suppliers.

We promote good employee well-being including mental, physical, emotional and economic health in our workplace. Besides, we have been improving our producing facilities to increase the work efficiency and performance of employees.

“ To be an international, leading and reliable supplier of hose clamps ”

is our vision. We, EVEREON, continue developing our further quality products and services to meet your requirements. Welcome to cooperate with us to create more value in your business.



EMBOSSED WORM GEAR HOSE CLAMPS

Embossed Worm Gear Hose Clamps are popular, economy and precision - engineered to use in various general applications.

Sometimes called worm drive hose clamps, non-perforated band hose clamps, or German type hose clamps.



- Precision-engineered and elegant appearance.
- In accordance with the DIN 3017 and RoHS & REACH standard.
- The smooth non-perforated band and flared edge band prevent hoses from cutting and fraying during installation.
- Material and clamping range are stamped on the band.
- W4 stainless steel is superior corrosion resistance.

TIGHTENING TORQUE

BAND WIDTH	REC. INSTALLATION TORQUE
9 mm	3.0 Nm (26 lbf-in)
12 mm	4.0 Nm (35 lbf-in)

MATERIAL

MATERIAL TYPE	BAND	HOUSING	SCREW
W2 (430 S.S.)	AISI 430 S.S.	AISI 430 S.S.	Plated Carbon Steel
W4 (304 S.S.)	AISI 304 S.S.	AISI 304 S.S.	AISI 304 S.S.

SIZE LIST

Band Width	CLAMPING RANGE (SIZE, DIAMETER)				PART NUMBER	
	Min. (mm)	Max. (mm)	Min. (inch)	Max. (inch)	W2 (430 S.S.)	W4 (304 S.S.)
					10020-	10040-
9 mm	8	12	5/16	1/2	09012	
	10	16	3/8	5/8	09016	
	12	20	1/2	3/4	09020	
	12	22	1/2	7/8	09022	
	16	25	5/8	1	09025	
	16	27	5/8	1-1/16	09027	
	20	32	3/4	1-1/4	09032	
	25	40	1	1-5/8	09040	
	30	45	1-3/16	1-3/4	09045	
	32	50	1-1/4	2	09050	
12 mm	40	60	1-5/8	2-3/8	09060	
	16	25	5/8	1	12025	
	16	27	5/8	1-1/16	12027	
	20	32	3/4	1-1/4	12032	
	25	40	1	1-5/8	12040	
	30	45	1-3/16	1-3/4	12045	
	32	50	1-1/4	2	12050	
	40	60	1-5/8	2-3/8	12060	
	50	70	2	2-3/4	12070	
	60	80	2-3/8	3-1/8	12080	
	70	90	2-3/4	3-1/2	12090	
	80	100	3-1/8	4	12100	
	90	110	3-1/2	4-3/8	12110	
	100	120	4	4-3/4	12120	
	110	130	4-3/8	5-1/8	12130	
	120	140	4-3/4	5-1/2	12140	
	130	150	5-1/8	5-7/8	12150	
	140	160	5-1/2	6-1/4	12160	
160	180	6-1/4	7	12180		

7 mm Hex. Head Screw for both bandwidth.

ADVANCED EMBOSSED WORM GEAR HOSE CLAMPS

Advanced Embossed Worm Gear Hose Clamps are precision-engineered to use in automotive, industrial, and applications of higher tightening demands.

Sometimes called worm drive hose clamps, non-perforated band hose clamps, or German type hose clamps.



- Precision-engineered and elegant appearance.
- Welding in the inside of housing for higher tightening torque.
- In accordance with the DIN 3017 and RoHS & REACH standard.
- The smooth non-perforated band and flared edge band prevent hoses from cutting and fraying during installation.
- Material and clamping range are stamped on the band.
- W4 and W5 stainless steel are superior corrosion resistance.

TIGHTENING TORQUE

BAND WIDTH	REC. INSTALLATION TORQUE
9 mm	4.0 Nm (35 lbf-in)
12 mm	5.0 Nm (44 lbf-in)

MATERIAL

MATERIAL TYPE	BAND	HOUSING	SCREW
W2 (430 S.S.)	AISI 430 S.S.	AISI 430 S.S.	Plated Carbon Steel
W4 (304 S.S.)	AISI 304 S.S.	AISI 304 S.S.	AISI 304 S.S.
W5 (316 S.S.)	AISI 316 S.S.	AISI 316 S.S.	AISI 316 S.S.

SIZE LIST

Band Width	CLAMPING RANGE (SIZE, DIAMETER)				PART NUMBER		
	Min. (mm)	Max. (mm)	Min. (inch)	Max. (inch)	W2 (430 S.S.)	W4 (304 S.S.)	W5 (316 S.S.)
					10220-	10240-	10250-
9 mm	8	12	5/16	1/2			09012
	10	16	3/8	5/8			09016
	12	20	1/2	3/4			09020
	12	22	1/2	7/8			09022
	16	25	5/8	1			09025
	16	27	5/8	1-1/16			09027
	20	32	3/4	1-1/4			09032
	25	40	1	1-5/8			09040
	30	45	1-3/16	1-3/4			09045
	32	50	1-1/4	2			09050
	40	60	1-5/8	2-3/8			09060
	50	70	2	2-3/4			09070
	60	80	2-3/8	3-1/8			09080
	70	90	2-3/4	3-1/2			09090
80	100	3-1/8	4			09100	
100	120	4	4-3/4			09120	
12 mm	16	25	5/8	1			12025
	16	27	5/8	1-1/16			12027
	20	32	3/4	1-1/4			12032
	25	40	1	1-5/8			12040
	30	45	1-3/16	1-3/4			12045
	32	50	1-1/4	2			12050
	40	60	1-5/8	2-3/8			12060
	50	70	2	2-3/4			12070
	60	80	2-3/8	3-1/8			12080
	70	90	2-3/4	3-1/2			12090
	80	100	3-1/8	4			12100
	90	110	3-1/2	4-3/8			12110
	100	120	4	4-3/4			12120
	110	130	4-3/8	5-1/8			12130
	120	140	4-3/4	5-1/2			12140
	130	150	5-1/8	5-7/8			12150
	140	160	5-1/2	6-1/4			12160
	160	180	6-1/4	7			12180
180	200	7	7-7/8			12200	

7 mm Hex. Head Screw for both bandwidth.

BUTTERFLY HOSE CLAMPS

Butterfly Hose Clamps are designed for DIY, home and garden applications.

No tools are required.



- In accordance with the DIN 3017 and RoHS & REACH standard.
- The smooth non-perforated band and flared edge band.
- Handle is designed to resist aging and fatiguing under outdoor.
- Installation without tools, easy to drive and release.

Rec. Installation Torque: 3.0 Nm (26 lbf-in)

MATERIAL

MATERIAL TYPE	BAND	HOUSING	SCREW	HANDLE
W2 (430 S.S.)	AISI 430 S.S.	AISI 430 S.S.	Plated Carbon Steel	POM

SIZE LIST

CLAMPING RANGE (SIZE, DIAMETER)					HANDLE COLOR	PART NUMBER
Band Width	Min. (mm)	Max. (mm)	Min. (inch)	Max. (inch)	-	W2(430 S.S.)
9 mm	8	12	5/16	1/2	Blue	10320-09012
	10	16	3/8	5/8	Orange	09016
	12	20	1/2	3/4	Green	09020
	12	22	1/2	7/8	Yellow	09022
	16	25	5/8	1	Blue	09025
	16	27	5/8	1-1/16	Orange	09027
	20	32	3/4	1-1/4	Blue	09032
	25	40	1	1-5/8	Blue	09040
	30	45	1-3/16	1-3/4	Blue	09045
	32	50	1-1/4	2	Blue	09050
	40	60	1-5/8	2-3/8	Blue	09060
	50	70	2	2-3/4	Blue	09070
	60	80	2-3/8	3-1/8	Blue	09080
	70	90	2-3/4	3-1/2	Blue	09090
	80	100	3-1/8	4	Blue	09100
	90	110	3-1/2	4-3/8	Blue	09110
	100	120	4	4-3/4	Blue	09120

MINI HOSE CLAMPS

Mini Hose Clamps are the popular general purpose in small hoses applications and narrow areas.

They also called micro gear or worm drive M type clamps.



- Under RoHS & REACH standard.
- The 0.35" bandwidth design is for meeting 26 lbf-in tightening torque.
- Clamping ranges are stamped on the band.
- All 304 and all 316 stainless steel are superior corrosion resistance.

REC. INSTALLATION TORQUE

3.0 Nm (26 lbf-in)

MATERIAL

MATERIAL TYPE	BAND	HOUSING	SCREW
430 S.S. Band	AISI 430 S.S.	AISI 430 S.S.	Plated Carbon Steel
Carbon Screw	AISI 304 S.S.	AISI 304 S.S.	Plated Carbon Steel
All 304 S.S.	AISI 304 S.S.	AISI 304 S.S.	AISI 304 S.S.
All 316 S.S.	AISI 316 S.S.	AISI 316 S.S.	AISI 316 S.S.
430 S.S. Screw	AISI 304 S.S.	AISI 304 S.S.	AISI 430 S.S.

SIZE LIST

CLAMPING RANGE (SIZE, DIAMETER)					PART NUMBER				
SAE Size	Min. (inch)	Max. (inch)	Min. (mm)	Max. (mm)	430 S.S. Band(W2)	Carbon Screw	All 304 S.S. (W4)	All 316 S.S. (W5)	430 S.S. Screw
					20020-	20030-	20040-	20050-	20060-
2	1/4	1/2	6	13			09013		
4	5/16	5/8	8	16			09016		
5	7/16	3/4	11	20			09020		
6	1/2	7/8	12	23			09023		
8	1/2	1	13	25			09025		
10	9/16	1-1/16	14	27			09027		

↔ 0.35" (9 mm) Band Width.

↕ 1/4" (6.4 mm) Hex. Head Screw.

1/2" HIGH TORQUE HOSE CLAMPS

High Torque Hose Clamps are the general purpose in automotive and industrial applications. The 2-piece lock housing construction provides a superior tightening torque.



- Under SAE J1508 type F Standard and RoHS & REACH standard.
- 2-piece housing and robust 4-piece lock structure.
- Perforated 1/2" band is flexible, easy installation and strong tightening.
- Multi-clamping range and various applications.
- Clamping ranges are stamped on the band.
- Material stamps on the housing.
- All 304 and all 316 stainless steel are superior corrosion resistance.

REC. INSTALLATION TORQUE

10.0 Nm
(88 lbf-in)

For Carbon Screw
All 304 S.S. Series

MATERIAL

MATERIAL TYPE	BAND	HOUSING	SCREW
Carbon Screw	AISI 304 S.S.	AISI 304 S.S.	Plated Carbon Steel
All 304 S.S.	AISI 304 S.S.	AISI 304 S.S.	AISI 304 S.S.
All 316 S.S.	AISI 316 S.S.	AISI 316 S.S.	AISI 316 S.S.

SIZE LIST

SAE Size	CLAMPING RANGE (SIZE, DIAMETER)				PART NUMBER		
	Min. (inch)	Max. (inch)	Min. (mm)	Max. (mm)	Carbon Screw 26030-	All 304 S.S.(W4) 26040-	All 316 S.S.(W5) 26050-
8	1/2	1	13	25		13025	
10	9/16	1-1/16	14	27		13027	
12	11/16	1-1/4	17	32		13032	
16	13/16	1-1/2	21	38		13038	
20	13/16	1-3/4	21	44		13044	
24	1	2	25	51		13051	
28	1-1/4	2-1/4	32	57		13057	
32	1-1/2	2-1/2	38	63		13063	
36	1-3/4	2-3/4	44	70		13070	
40	2	3	51	76		13076	
44	2-1/4	3-1/4	57	82		13082	
48	2-1/2	3-1/2	64	89		13089	
52	2-3/4	3-3/4	70	95		13095	
56	3	4	76	102		13102	
60	3-1/4	4-1/4	82	108		13108	
64	3-1/2	4-1/2	89	114		13114	
68	3-3/4	4-3/4	95	121		13121	
72	4	5	102	127		13127	
80	4-1/2	5-1/2	114	140		13140	
88	5	6	127	152		13152	
96	5-1/2	6-1/2	140	165		13165	
104	6	7	152	178		13178	
120	7	8	178	203		13203	
136	7	9	178	229		13229	
152	2	10	51	254		13254	
188	2	12-1/4	51	311		13311	
212	11-3/4	13-3/4	298	349		13349	
248	1-3/4	16	44	406		13406	
270	15-3/8	17-3/8	391	441		13441	
312	18	20	457	508		13508	

↔ 1/2" (12.7 mm) Band Width. ⚙ 5/16" (7.9 mm) Hex. Head Screw.

WORM DRIVE HOSE CLAMPS

Worm Drive Hose Clamps are popular and economy to widely applications in industrial, automotive and agriculture applications. They also called worm gear hose clamps and American type hose clamps.



- Under SAE J1508 Standard and RoHS & REACH standard.
- Perforated 1/2" band is flexible, easy installation and strong tightening.
- Multi-clamping range and various applications.
- Clamping ranges are stamped on the band.
- Material stamps on the housing.
- All 304 and all 316 stainless steel are superior corrosion resistance.

REC. INSTALLATION TORQUE

5.0 Nm
(44 lbf-in)

MATERIAL

MATERIAL TYPE	BAND	HOUSING	SCREW
430 S.S. Band	AISI 430 S.S.	AISI 430 S.S.	Plated Carbon Steel
Carbon Screw	AISI 304 S.S.	AISI 304 S.S.	Plated Carbon Steel
All 304 S.S.	AISI 304 S.S.	AISI 304 S.S.	AISI 304 S.S.
All 316 S.S.	AISI 316 S.S.	AISI 316 S.S.	AISI 316 S.S.
430 S.S. Screw	AISI 304 S.S.	AISI 304 S.S.	AISI 430 S.S.

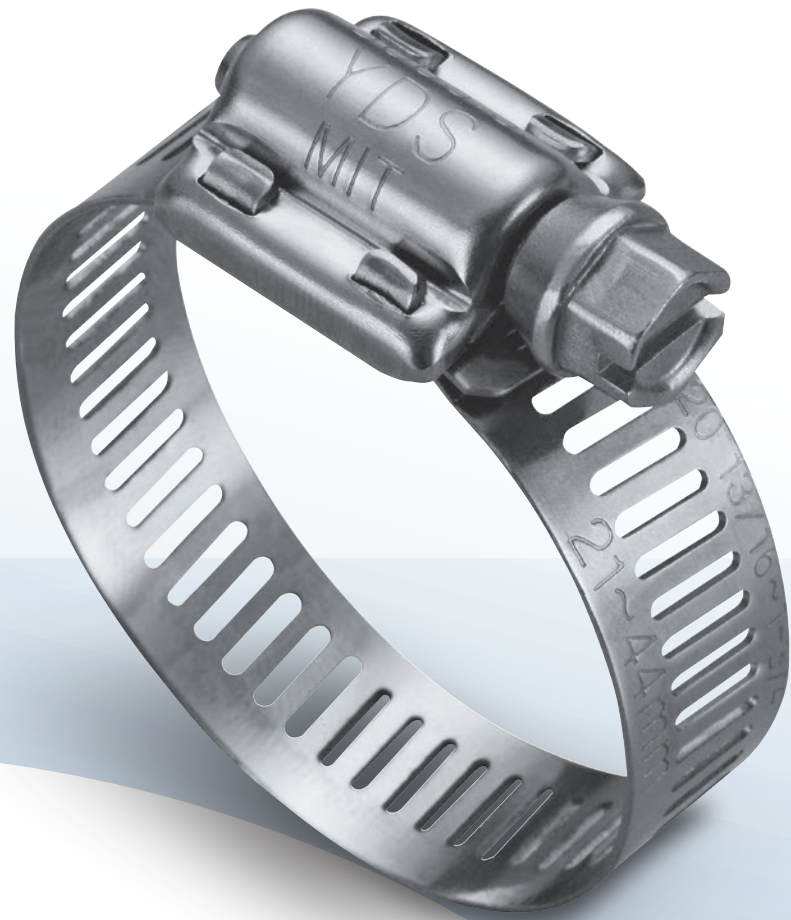
SIZE LIST

CLAMPING RANGE (SIZE, DIAMETER)					PART NUMBER				
SAE Size	Min. (inch)	Max. (inch)	Min. (mm)	Max. (mm)	430 S.S. Band (W2)	Carbon Screw	All 304 S.S. (W4)	All 316 S.S. (W5)	430 S.S. Screw
					20020-	20030-	20040-	20050-	20060-
6	1/2	7/8	12	23			13023		
8	1/2	1	13	25			13025		
10	9/16	1-1/16	14	27			13027		
12	11/16	1-1/4	17	32			13032		
16	13/16	1-1/2	21	38			13038		
20	13/16	1-3/4	21	44			13044		
24	1	2	25	51			13051		
28	1-1/4	2-1/4	32	57			13057		
32	1-1/2	2-1/2	38	63			13063		
36	1-3/4	2-3/4	44	70			13070		
40	2	3	51	76			13076		
44	2-1/4	3-1/4	57	82			13082		
48	2-1/2	3-1/2	64	89			13089		
52	2-3/4	3-3/4	70	95			13095		
56	3	4	76	102			13102		
60	3-1/4	4-1/4	82	108			13108		
64	3-1/2	4-1/2	89	114			13114		
68	3-3/4	4-3/4	95	121			13121		
72	4	5	102	127			13127		
80	4-1/2	5-1/2	114	140			13140		
88	5	6	127	152			13152		
96	5-1/2	6-1/2	140	165			13165		

↔ 1/2" (12.7 mm) Band Width. ⚙ 5/16" (7.9 mm) Hex. Head Screw.

9/16" HIGH TORQUE HOSE CLAMPS

High Torque Hose Clamps are the general purpose in automotive and heavy-duty industrial applications. The 2-piece lock housing construction provides a superior tightening torque.



- Under SAE J1508 type F Standard and RoHS & REACH standard.
- 2-piece housing and robust 4-piece lock structure.
- Perforated 9/16" (14.2mm) band is easy installation and strong tightening.
- Multi-clamping range and various applications.
- Clamping ranges are stamped on the band.
- Material stamps on the housing.
- All 304 and all 316 stainless steel are superior corrosion resistance.

REC. INSTALLATION TORQUE

10.0 Nm
(88 lbf-in)

For Carbon Screw
All 304 S.S. Series

MATERIAL

MATERIAL TYPE	BAND	HOUSING	SCREW
Carbon Screw	AISI 304 S.S.	AISI 304 S.S.	Plated Carbon Steel
All 304 S.S.	AISI 304 S.S.	AISI 304 S.S.	AISI 304 S.S.

SIZE LIST

SAE Size	CLAMPING RANGE (SIZE, DIAMETER)				PART NUMBER	
	Min. (inch)	Max. (inch)	Min. (mm)	Max. (mm)	Carbon Screw	All 304 S.S.(W4)
					26230-	26240-
12	11/16	1-1/4	17	32		14032
16	13/16	1-1/2	21	38		14038
20	13/16	1-3/4	21	44		14044
24	1	2	25	51		14051
28	1-1/4	2-1/4	32	57		14057
32	1-1/2	2-1/2	38	63		14063
36	1-3/4	2-3/4	44	70		14070
40	2	3	51	76		14076
44	2-1/4	3-1/4	57	82		14082
48	2-1/2	3-1/2	64	89		14089
52	2-3/4	3-3/4	70	95		14095
56	3	4	76	102		14102
60	3-1/4	4-1/4	82	108		14108
64	3-1/2	4-1/2	89	114		14114
68	3-3/4	4-3/4	95	121		14121
72	4	5	102	127		14127
80	4-1/2	5-1/2	114	140		14140
88	5	6	127	152		14152
96	5-1/2	6-1/2	140	165		14165
104	6	7	152	178		14178
120	7	8	178	203		14203
136	7	9	178	229		14229
152	2	10	51	254		14254
188	2	12-1/4	51	311		14311
212	11-3/4	13-3/4	298	349		14349
248	1-3/4	16	44	406		14406
270	15-3/8	17-3/8	391	441		14441
312	18	20	457	508		14508

↔ 9/16" (14.2 mm) Band Width. ⚙ 5/16" (7.9 mm) Hex. Head Screw.

EAR CLAMPS

- They are fast and easy to installation.
- The no steps or gaps on the inside band makes the inner circumference of the clamps for a 360° leak-free and safe seal.
- The outside interlock, smooth band and burr-free edge prevent hoses from damaging during installation.

Material: AISI 304 stainless steel



SIZE	BAND T x W		CLAMPING RANGE (SIZE, DIAMETER)				PART NUMBER
	mm	inch	Min. (mm)	Max. (mm)	Min. (inch)	Max. (inch)	
-							AISI 304 S.S.
10.5	0.5 x 5	0.020 x 0.197	8.8	10.5	0.346	0.413	40045-50105
11.3			9.6	11.3	0.378	0.445	40045-50113
13.3	0.6 x 7	0.024 x 0.276	10.8	13.3	0.425	0.524	40046-70133
15.3			12.8	15.3	0.504	0.602	40046-70153
18.5			15.7	18.5	0.618	0.728	40046-70185

◆ Pliers tool for ear clamps.

ADJUSTABLE EAR CLAMPS

- They are fast and easy to installation.
- The multi interlock positions are for widely diameter range.
- The outside interlock, smooth band and burr-free edge prevent hoses from damaging during installation.

Material: AISI 430 and 304 stainless steel



SIZE	BAND T x W		CLAMPING RANGE (SIZE, DIAMETER)				PART NUMBER	
	mm	inch	Min. (mm)	Max. (mm)	Min. (inch)	Max. (inch)	AISI 430 S.S. 41025-	AISI 304 S.S. 41045-
30	0.5 x 7	0.020 x 0.276	22	30	0.866	1.181	70300	
32			24	32	0.945	1.260	70320	
35			27	35	1.063	1.378	70350	
40			32	40	1.260	1.575	70400	
45			37	45	1.457	1.772	70450	
50			42	50	1.654	1.969	70500	
92			84	92	3.307	3.622	70920	
98			90	98	3.543	3.858	70980	

◆ Pliers tool for ear clamps.

CV JOINT BOOT CLAMPS

FREE END TYPE

- The non-stamp and smooth band and burr-free edge prevent rubbers from damaging during installation.

Material: AISI 430 stainless steel



SIZE	BAND T x W		BAND LENGTH		PART NUMBER
	mm	inch	mm	inch	
-					AISI 430 S.S.
360	0.3 x 6.4	0.012 x 0.252	360	14.17	47123-60360
740			740	29.13	47123-60740

◆ Free end clamp tool for installation.

INSIDE INTERLOCK TYPE

- The multi position interlocks provide widely diameter ranges for different sizes of rubbers.

Material: AISI 430 stainless steel



SIZE	BAND T x W		BAND LENGTH		CLAMPING RANGE		PART NUMBER
	mm	inch	mm	inch	mm	inch	
-							AISI 430 S.S.
160	0.5 x 6.4	0.020 x 0.252	160	6.30	27 - 45	1.06 - 1.77	47325-60160
425	0.6 x 8.0	0.024 x 0.315	425	16.73	38 - 115	1.50 - 4.52	47326-80425

◆ Pliers tool for ear clamps.

OUTSIDE INTERLOCK TYPE

- Outside interlocks prevent rubber hoses from damaging.
- The multi position interlocks provide widely diameter ranges for different sizes of rubbers.

Material: AISI 430 stainless steel



SIZE	BAND T x W		BAND LENGTH		CLAMPING RANGE		PART NUMBER
	mm	inch	mm	inch	mm	inch	
-							AISI 430 S.S.
245	0.5 x 7	0.020 x 0.276	245	9.65	32 - 58	1.26 - 2.28	47425-70245
405			405	15.94	73 - 108	2.87 - 4.25	47425-70405

◆ Pliers tool for ear clamps.

MICRO HOSE CLAMPS

Micro Hose Clamps are tiny and small to use in small pipes.

- In accordance with the RoHS & REACH standard.
- Design for installing in narrow areas.

Rec. Installation Torque: 1.0 Nm (9 lbf-in)



MATERIAL

MATERIAL TYPE	BAND	HOUSING	SCREW
W2 (430 S.S.)	AISI 430 S.S.	AISI 430 S.S.	Plated Carbon Steel

CLAMPING RANGE (SIZE, DIAMETER)					PART NUMBER	
Band Width	Min. (mm)	Max. (mm)	Min. (inch)	Max. (inch)	W2 (430 S.S.)	
					10520-	
6.5 mm	7	11	9/32	7/16	07011	
	9	14	11/32	9/16	07014	
	10	19	3/8	3/4	07019	

5 mm Hex. Head Screw.

BRIDGE HOSE CLAMPS

Bridge hose clamps are special designed for woodwork and dust collected pipes.

- In accordance with the RoHS & REACH standard.
- The bridge structure is designed for crossing the wire of corrugated pipes.
- Butterfly handle and Hex. head screw are available.

Rec. Installation Torque: 3.0 Nm (26 lbf-in)



MATERIAL

MATERIAL TYPE	BAND	HOUSING	SCREW	HANDLE
W2 (430 S.S.)	AISI 430 S.S.	AISI 430 S.S.	Plated Carbon Steel	POM

CLAMPING RANGE (SIZE, DIAMETER)					PART NUMBER	
Band Width	Min. (mm)	Max. (mm)	Min. (inch)	Max. (inch)	Left Hand	Right Hand
					19027-	19027-
9 mm	51	70	2	2-3/4	09070L	09070R
	101	120	4	4-3/4	09120L	09120R

RUBBER LINED CLAMPS

Lined Band Clamps are special design for protecting rubber hoses, and preventing hose from extruding and shearing during installation.

- Under SAE J1508 Standard and RoHS & REACH standard.
- The lined band protects the hoses.
- 1/2" (12.7 mm) Band Width.
- 5/16" (7.9 mm) Hex. Head Screw.

Rec. Installation Torque: 5.0 Nm (44 lbf-in)



MATERIAL

MATERIAL TYPE	BAND	HOUSING	SCREW
430 S.S. Band	AISI 430 S.S.	AISI 430 S.S.	Plated Carbon Steel
Carbon Screw	AISI 304 S.S.	AISI 304 S.S.	Plated Carbon Steel
All 304 S.S.	AISI 304 S.S.	AISI 304 S.S.	AISI 304 S.S.

BAND CLAMPS

Band Clamps offer 3M or 5M length band with 8 buckles. This clamp is for DIY market, you can make a clamp for your requirements.

- Band length is available in 3 and 5 meter.
- Each set included 1 band and 8 buckles.
- 5/16" (8 mm) Band Width.
- 1/4" (6.4 mm) Hex. Head Screw.

Rec. Installation Torque: 2.0 Nm (17 lbf-in)



MATERIAL

MATERIAL TYPE	BAND	HOUSING/BUCKLES	SCREW
430 S.S. Band	AISI 430 S.S.	AISI 304 S.S.	Plated Carbon Steel
All 304 S.S.	AISI 304 S.S.	AISI 304 S.S.	AISI 304 S.S.

BALL LOCK CABLE TIES

Ball lock cable ties are suitable for automotive, machine, construction, and outside area.



- Stainless steel material is superior corrosion resistance and durable bundle.
- Easy to install by hand or banding tool.

Material: AISI 304 and 316 stainless steel are available.

SIZE LIST

BAND WIDTH		BAND LENGTH		PART NUMBER	
mm	inch	mm	inch	AISI 304 S.S. 37042-	AISI 316 S.S. 37052-
4.6	0.18	127	5.00	50127	
		152	5.98	50152	
		201	7.91	50201	
		266	10.47	50266	
		300	11.81	50300	
		362	14.25	50362	
		521	20.51	50521	
		679	26.73	50679	
7.9	0.31	127	5.00	80127	
		152	5.98	80152	
		201	7.91	80201	
		266	10.47	80266	
		300	11.81	80300	
		362	14.25	80362	
		521	20.51	80521	
		679	26.73	80679	

TT HIGH-PRESSURE HEAVY DUTY CLAMPS

TT High-Pressure Heavy Duty Clamps provide reliable pipe connections. Designed for use in applications of industrial machinery, trucks and equipment with high vibration.



- The smooth non-perforated band prevent hoses from cutting and fraying during installation.
- W4 stainless steel is superior corrosion resistance.

Material: W4 (304 stainless steel)

SIZE LIST

Band Width	Screw	CLAMPING RANGE (SIZE, DIAMETER)				PART NUMBER
		Min. (mm)	Max. (mm)	Min. (inch)	Max. (inch)	W4 (304 S.S.)
19 mm	10 mm	17	19	11/16	3/4	50040-
		20	22	13/16	7/8	19019
		23	25	7/8	1	19022
		26	28	1-1/32	1-1/8	19025
		29	31	1-1/8	1-1/4	19028
		32	35	1-1/4	1-3/8	19031
		36	39	1-7/16	1-9/16	19035
		40	43	1-9/16	1-11/16	19039
22 mm	13 mm	44	47	1-3/4	1-7/8	19043
		48	51	1-7/8	2	22047
		52	55	2-1/16	2-3/16	22051
		56	59	2-3/16	2-5/16	22055
		60	63	2-3/8	2-1/2	22059
		64	67	2-1/2	2-5/8	22063
		68	73	2-11/16	2-7/8	22067
		74	79	2-15/16	3-1/8	22073
25 mm	13 mm	80	85	3-1/8	3-3/8	22079
		86	91	3-3/8	3-9/16	25085
		92	97	3-5/8	3-13/16	25091
		98	103	3-7/8	4-1/16	25097
		104	112	4-1/8	4-7/16	25103
		113	121	4-7/16	4-3/4	25112
		122	130	4-13/16	5-1/8	25121

CUSTOMIZED PRODUCTS



10520- series
Micro Hose Clamps



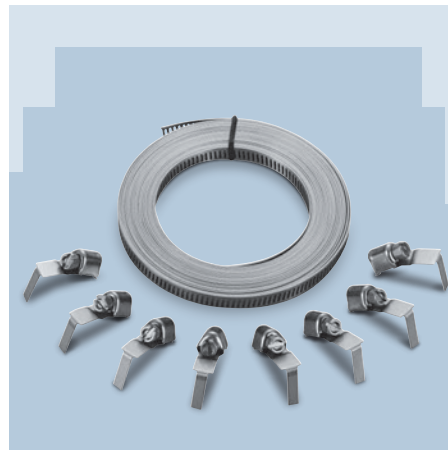
20700- / 20900- series
Rubber Lined Clamps



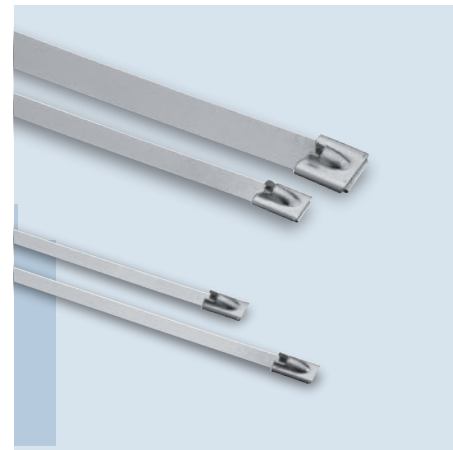
50040- series
TT Heavy Duty Clamps



14040- / 24040- series
Chimney Pipe Connector



62000- series
Band Clamps



37000- series
Cable Ties



19027- series
Bridge Clamps



Clamps with Gap,
Hole Band



Hexagon Socket Screw

ASSORTMENT CLAMPS / TOOLS



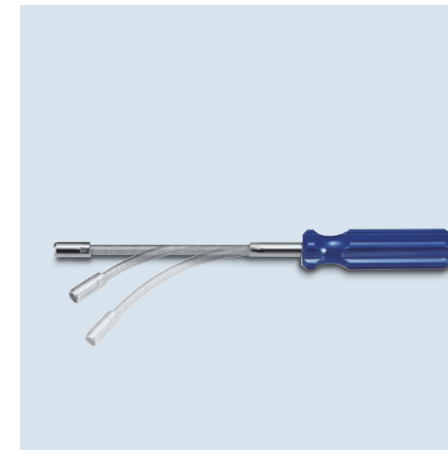
90700- series
Assortment Kit



90300- series
110pcs Clamps Rack



90100- series
120pcs Clamps Display



80011- series
Nut Driver



80013- series
Pliers



80012- series
Free End Clamp Tool

PACKAGING

Being available in bulk packaging, pack of 10, blister card packaging, polybag packaging, tag packaging, assortment kits and customer designed packaging.

